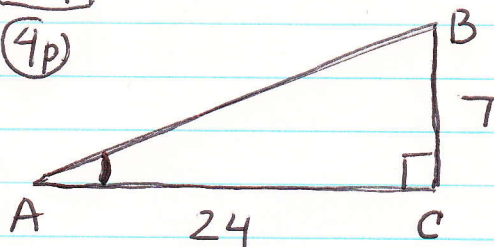


#9

(4p)



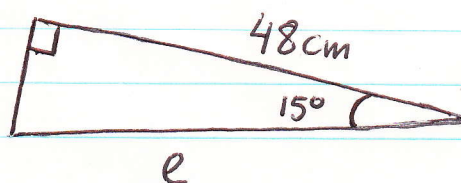
$$AB = \sqrt{7^2 + 24^2} = 25$$

$$\sin A = \frac{7}{25} \quad \cos A = \frac{24}{25}$$

$$\tan A = \frac{7}{24}$$

#18

(4p)



$$\cos 15^\circ = \frac{48}{e}$$

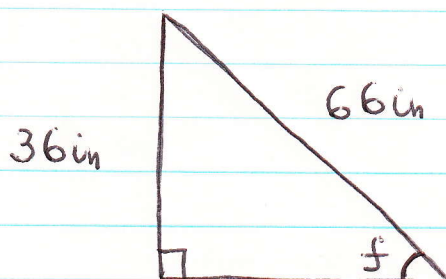
$$\cos 15^\circ = 0.966, \quad 0.966 = \frac{48}{e}$$

$$\frac{0.966}{1} = \frac{48}{e}, \quad 0.966e = 48, \quad e = \frac{48}{0.966} \approx 50 \text{ cm}$$

$$\underline{e = 50 \text{ cm}}$$

#19

(3p)



$$\sin f = \frac{36}{66}$$

$$\sin f = 0.545$$

$$f = \sin^{-1} f \approx 33^\circ$$

$$\underline{f = 33^\circ}$$